



# DEEP CYCLE - SOLAR

**SERIES:** 5000  
**MODEL:** 2 YS 31PS

**BATTERY TYPE:** 2 VOLTS

**DESIGN CRITERIA:** 10 YEAR WARRANTY 15 YEAR LIFE  
3300 CYCLES

### DIMENSIONS:

LENGTH	394 MM	15 1/2 INCHES	WEIGHT DRY	91 KG	200 LBS.
WIDTH	229 MM	9 INCHES	WEIGHT WET	129 KG	285 LBS.
HEIGHT	803 MM	31 5/8 INCHES			

### CONTAINER CONSTRUCTION:

<b>CONTAINER (INNER):</b>	POLYPROPYLENE	<b>HANDLES:</b>	MOLDED	<b>CELLS:</b>	1
<b>CONTAINER (OUTER):</b>	HIGH DENSITY POLYETHYLENE			<b>PLATES / CELL:</b>	33
<b>COVER (INNER):</b>	POLYPROPYLENE - HEAT SEALED TO INNER CONTAINER				
<b>COVER (OUTER):</b>	HIGH DENSITY POLYETHYLENE SNAP FIT TO OUTER CONTAINER				
<b>TERMINALS:</b>	FLAG WITH STAINLESS STEEL NUTS AND BOLTS				

### PLATES:

#### POSITIVE PLATE DIMENSION:

HEIGHT	600 MM	23.625 INCHES
WIDTH	143 MM	5.625 INCHES
THICKNESS	6.99 MM	0.275 INCHES

#### SEPARATOR:

**THICKNESS** 3 MM 0.105 INCHES

#### NEGATIVE PLATE DIMENSION:

HEIGHT	600 MM	23.625 INCHES
WIDTH	143 MM	5.625 INCHES
THICKNESS	4.57 MM	0.180 INCHES

#### INSULATION:

**GLASS MAT** 1 MM 0.020 INCHES  
POSITIVE PLATE DOUBLE WRAPPED WITH SLYVER  
ENVELOPED WITH HEAVY DUTY SEPARATOR

#### ELECTROLYTE RESERVE: (ABOVE PLATES)

95 MM 3.75 INCHES

**CAPACITY:** 20 HR RATE 2430

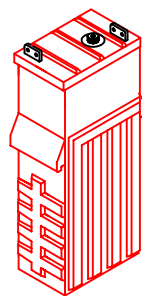
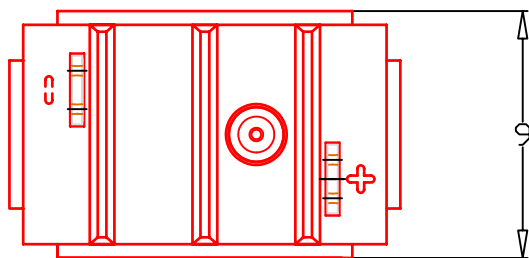
#### CRANK AMPS:

COLD (CCA)	0°F / -17.8'	5740
MARINE (MCA)	32°F / 0°C	7175

#### RESERVE CAPACITY:

RC @ 25A 7772 MINUTES

	HOUR RATE	SPECIFIC GRAVITY	CAP / AH	CURRENT / AMPS
<b>CAPACITY @</b>	<b>20 HOUR RATE</b>	<b>1.280 SP. GR.</b>	<b>2430</b>	<b>121.5</b>
CAPACITY @	15 HOUR RATE	1.280 SP. GR.	2284	152.3
CAPACITY @	12 HOUR RATE	1.280 SP. GR.	2163	180.2
CAPACITY @	10 HOUR RATE	1.280 SP. GR.	2066	206.6
CAPACITY @	8 HOUR RATE	1.280 SP. GR.	1944	243.0
CAPACITY @	6 HOUR RATE	1.280 SP. GR.	1798	299.7
CAPACITY @	5 HOUR RATE	1.280 SP. GR.	1701	340
CAPACITY @	4 HOUR RATE	1.280 SP. GR.	1580	395
CAPACITY @	3 HOUR RATE	1.280 SP. GR.	1434	478
CAPACITY @	2 HOUR RATE	1.280 SP. GR.	1239	620
CAPACITY @	1 HOUR RATE	1.280 SP. GR.	875	875



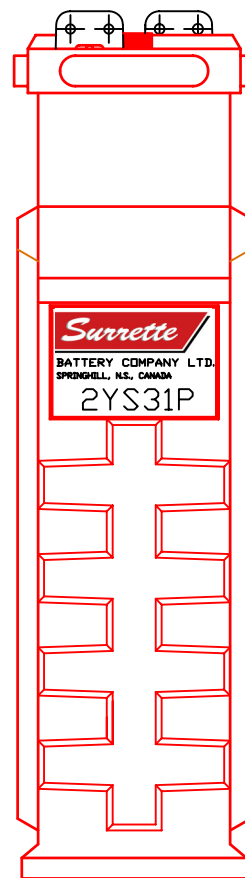
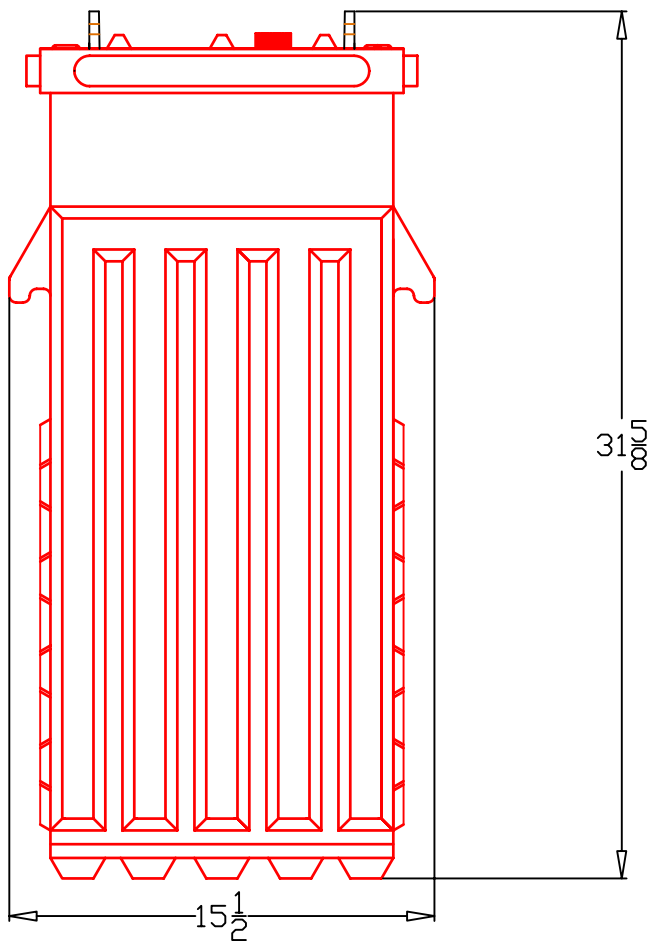
PART NUMBER: 2-YS-31P

WEIGHT WET EST: 285 LB/ 130 KG  
(ESTIMATED)

WEIGHT EST: 200 LB/ 91 KG  
(ESTIAMTED)

CAPACITY 1,993 AH 8 HR  
2,430 AH 20 HR  
3,435 AH 100 HR

OVERALL DIMS: 15½ X 9" X 31½ "



MAX HT WITH OPTIONAL 32½"  
HYDROCAPS

AVAILABLE JUL-06

BATTERY COMPANY LTD. SPRINGHILL, NOVA SCOTIA, CANADA	
TITLE: 2 YS 31P	
DESCRIPTION: 2V / 1 CELL 31 PLATE 500/5000 SERIES	
CONTACT INFO: WEB: WWW.SURRETTE.COM E-MAIL: SALES@SURRETTE.COM PHONE: 1-800-681-9914	
SCALE: 1" = 7" 8.5" X 11"	JPEG: NOT TO SCALE
DATE: 16-MAR-06 REVISION REV 0	
DRAWING NO.: BD2YS31P	